



ABIUSO
LUXURY ESTATES
INTERNATIONAL

Abiuso Luxury Estates International

AGENCY — BARI

BAYSHORE — NC

Iconic Design Duplex at the Grove at Grand Bay

\$ 6.490.000

PRICE

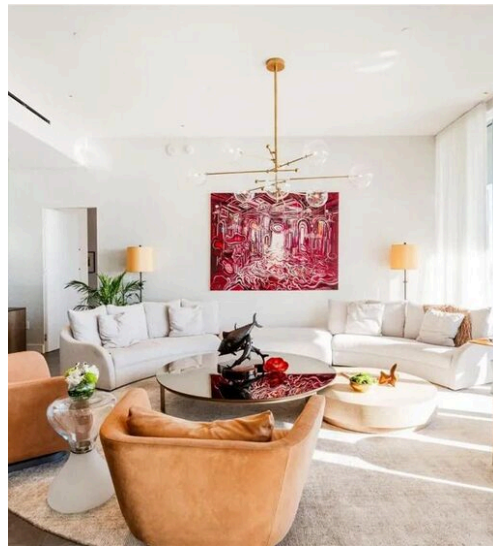
278 m²

SQUARE METRES

4

ROOMS

The Spaces



DESCRIPTION

Iconic Design Duplex at the Grove at Grand Bay

An exclusive, ready-to-live-in masterpiece, this extremely rare duplex in the South Tower of the legendary Grove at Grand Bay spans the sixth to seventh floors, offering an unparalleled living experience in the heart of Coconut Grove. This two-level, designer-designed, fully furnished residence features 3 bedrooms, 3 1/2 baths and is distinguished by 10-foot ceilings and floor-to-ceiling windows framing continuous, breathtaking views of the bay, with southeastern exposure. The two impressive 10-foot-deep private terraces become true outdoor lounges, perfect for living and entertaining with a natural backdrop of absolute beauty. Grove at Grand Bay

is not simply a residence, but an architectural landmark that has redefined the Coconut Grove skyline. Designed by visionary Bjarke Ingels, this boutique building is celebrated for its iconic form, impeccable service and gallery-style residences designed for design collectors and lovers of excellence. Resident amenities include a private dining room with an in-house chef, state-of-the-art gymnasium, rooftop and ground-floor rooftop pools, a world-class spa, butler service, a silent library, and 24-hour concierge. A true sanctuary of design, luxury, and privacy, designed for those who wish to own one of Coconut Grove's most iconic residences.

 **278 m²**
AREA

 **4**
ROOMS

 **3**
BATHROOMS

 **\$ 6.490.000**
PRICE

FEATURES



LUXURIOUS
FINISHES



EXCLUSIVE
POSITION



PARKING
SPACE



TERRACE



PANORAMIC
VIEW



ABIUSO
LUXURY ESTATES
INTERNATIONAL
Abiuso Luxury Estates
International

CONTACTS

Book a visit

Contact us for more information
or to schedule a viewing.



PHONE
3466930714



EMAIL
immobilgigi@gmail.com



ADDRESS
Via Napoleone Colajanni 3/A, Bari, Bari