



NICE — PROVENCE-ALPES-CÔTE D'AZUR

Nice , Promenade des Anglais. Spacious studio apartment with sleeping area and panoramic sea view

€ 500.000

PRICE

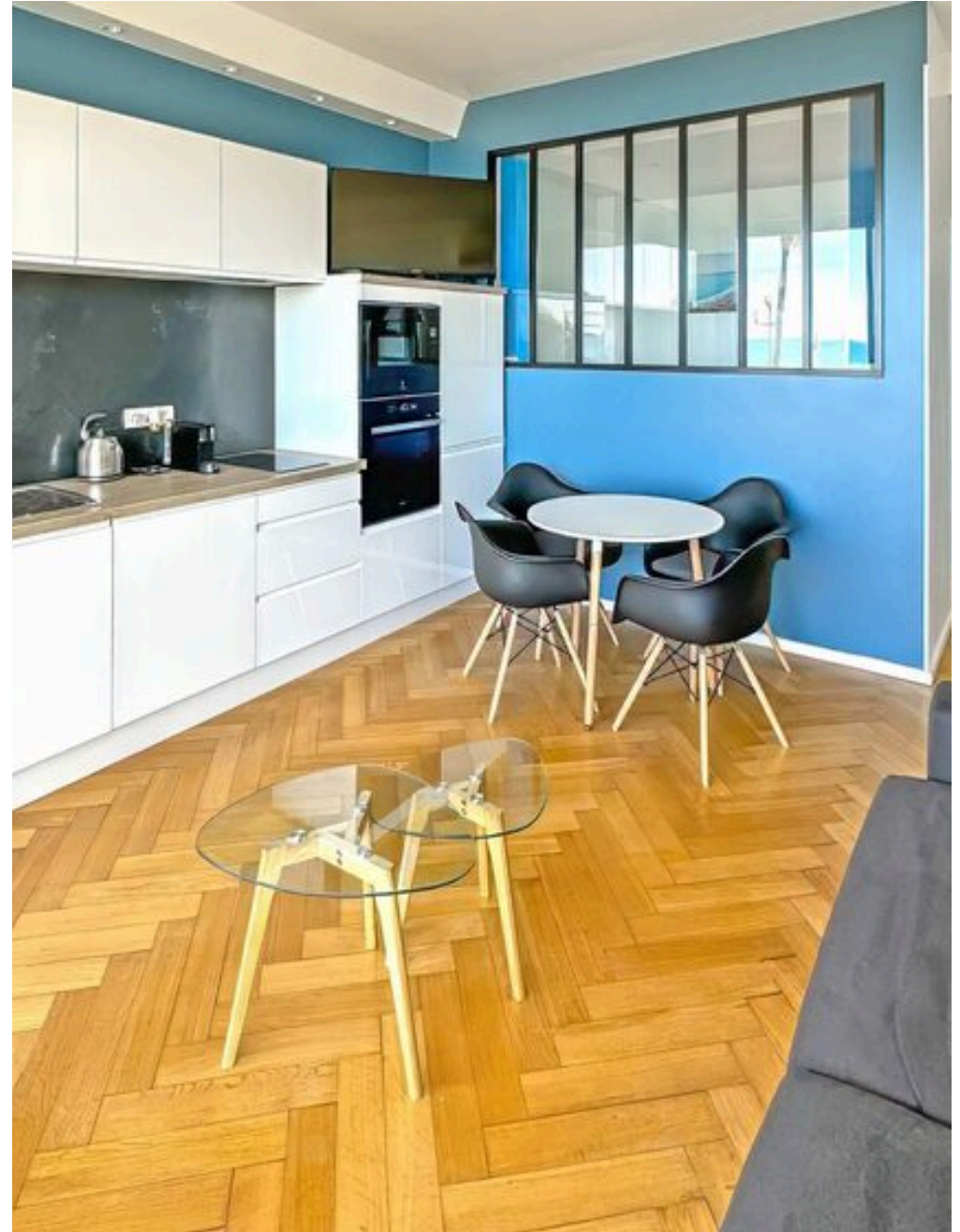
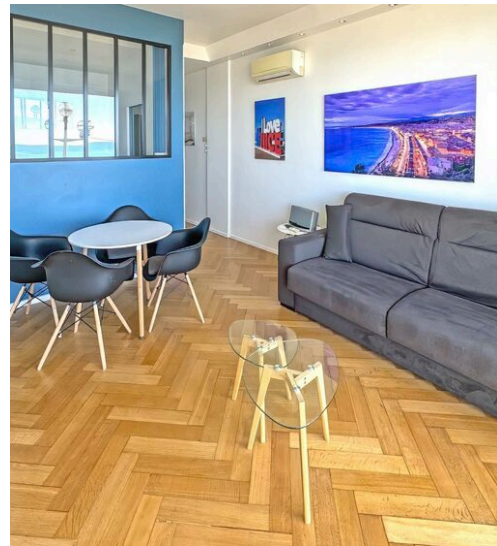
36 m<sup>2</sup>

SQUARE METRES

1

ROOMS

# The Spaces





## DESCRIPTION


# Nice , Promenade des Anglais. Spacious studio apartment with sleeping area and panoramic sea view


PROMENADE DES ANGLAIS, large studio apartment with sleeping area. Facing the sea, close to the Méridien, on the first line in an elegant condominium with concierge, beautiful and spacious 36 sqm studio apartment, completely redone and ultra modern located on the 1st floor. This apartment consists of a living room with open kitchen and a sleeping area, a bathroom with toilet and a balcony facing the sea to enjoy the magnificent view offered by the Baie des Anges. Ideal as a primary or secondary

residence or seasonal rental investment in one of the most desirable locations in Nice! Your ideal base to live in a prestigious building in the heart of the city, facing the Mediterranean, the Port of Nice, Vieux Nice Cours Saleya, the Opera, a wide range of restaurants, cafes, bars, the shopping streets of the pedestrian area in Avenue Jean-Médecin, Av de Verdun and Rue Paradis and the luxury boutiques! Shared happiness 365 days a year! Come visit us as soon as possible!

 **36 m<sup>2</sup>**  
AREA

 **1**  
ROOMS

 **1**  
BATHROOMS

 **€ 500.000**  
PRICE

## FEATURES



COMFORTABLE  
TO THE  
SERVICES



EXCLUSIVE  
POSITION



TERRACE



PANORAMIC  
VIEW



PR PROPERTIES  
THE PERFECT HOME  
BY KELLER WILLIAMS  
PR PROPERTIES

## CONTACTS

### Book a visit

Contact us for more information  
or to schedule a viewing.



PHONE

0033 6 48 21 28 95 - 0039 351 738 0678



EMAIL

massimo.robecchi@kwitalia.com



ADDRESS

16 avenue de la Pastorelle, Nice, Alpes Maritimes